

# ***Meet the participants of the 1440 Multiversity Connected Learning Vision Retreat***

***March 20-22<sup>nd</sup>, 2020***



***Anamaria Aristizabal***

***Facilitator for Connected Learning Vision Retreat***

Anamaria Aristizabal is a certified coach, leadership trainer, and change agent, as well as author of the book “Life Re-Vision” (published in Colombia), a creative method to uncover our purpose. She is the co-founder of Leading Change Institute, which offers a new approach to participatory leadership. She also works with New Ventures West as faculty, a world class coaching school, as a coach and coach trainer. She is a leadership trainer at George Washington University's Center for Public Excellence, a leadership development initiative for change agents from

around the world. She is an Art of Hosting practitioner and trainer, with extensive experience designing and facilitating powerful learning journeys for different groups.

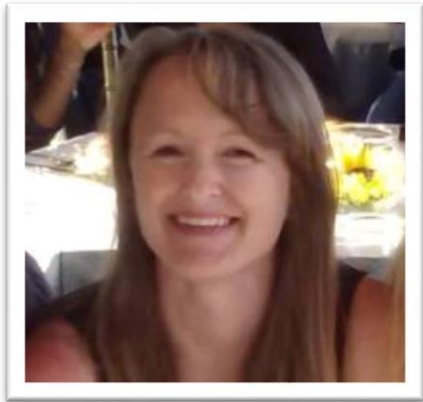
***Bill Daul***

***Photographer for Connected Learning Vision Retreat***

Bill Daul has worked at Sun Microsystems, Informix Software, McDonnell-Douglas Corporation, Tymshare, the United States Geological Survey and with luminary Douglas Engelbart of SRI/ARC. In all of these positions, Bill took a leadership role in helping organizations reach new levels of innovation and success by forging unexpectedly powerful creative links to other people and organizations – often in different fields, and highly synergistic. Bill Daul is the convener for the Next Now Network bringing together groups of visionaries. These groups of visionaries were selected to meet regularly to explore and transcend creative and intellectual boundaries -- from the past...to the here...to the next now. Bill Daul has been instrumental in the formation of a large number of businesses and collaborations in Silicon Valley and beyond. He is particularly attuned to discerning the highest-leverage way to combine innovative technologies with people and organizations. Typically, this involved bringing CEO-,



CTO-, VP-, Senior Fellow- level people together to create new business models and fresh strategic approaches. In this, he opened up a number of new business relationships for Herriot Research, an adjunct to Bios Group, Inc. of Santa Fe, including IBM, Catarra Inc. (was SoftSource Corp), Mithya Inc., SelfCorp, etc. Bill has a special talent for taking valuable tacit knowledge in an organization and making it explicit, so that it can serve as the foundation and stimulus for further innovation and value.



### ***Stephanie Eberle***

Stephanie Eberle is the Executive Director of BioSci Careers at Stanford Medicine. Stephanie began their tenure at BioSci Careers in 2008 developing curricula and resources for all biosciences trainees to explore and define a path toward their own careers of choice. In their 20+ years of professional experience, they have found that their passion is helping others find and follow theirs. Stephanie helps trainees with all aspects of professional/career development, and they are especially interested in issues of gender and diversity in the workplace. Stephanie holds an M.Ed in counseling.

### ***Lissa Matyas***

Lissa works for the Canadian nonprofit Mitacs, a national research organization that operates research and training programs in fields related to industrial and social innovation. Her job is to leverage the potential that exists between universities, industry and government to unlock knowledge and innovation on the global landscape. Lissa helps governments development their Research and Development ecosystem by engaging graduate students - both PhDs and postdoctoral fellows - in bringing research out of the labs and into society, connecting industry and academia through partnerships. Her previous position at McGill University was Director of Graduate and Post-doctoral studies; this combined with her social entrepreneur work focuses her view from a societal perspective, unleashing graduate students into the many, and various, areas of industry, rather than focusing on training individual graduate students in career development and improved career opportunities.





### ***Gary McDowell***

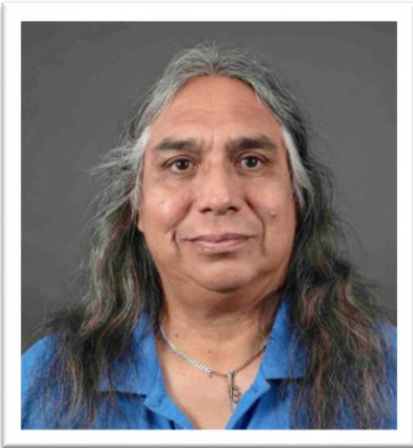
Gary McDowell is a consultant for organizations looking to improve the way they interact with or incorporate early career researchers into their work. His goal is to ensure that organizations can adapt to the changing needs of the research enterprise, focusing on the needs and issues facing upcoming generations of researchers and also to empower future generations of aspiring researchers to make evidence-based rational decisions that help them reach their desired potential. Gary co-founded and ran the non-profit Future of Research for three years. During that time, he sat on the National Academies of Sciences, Engineering and Medicine Next Generation

Researchers Initiative, a study mandated by the U.S. Congress under the 21st Century Cures Act. Gary served as the youngest member of the committee and authored the resulting report, "Breaking Through". Gary has a PhD in Oncology, Bachelor's and Master's degrees in Natural Sciences (Chemistry) all from the University of Cambridge, UK.

### ***Joanna Nelson***

Joanna Nelson has over 20 years' experience in research and conservation through freshwater, estuarine, and coastal-ocean habitats; creating environmental solutions; and working at the science-policy-action interface. She is the founder and principal of LandSea Science, with the mission of crafting environmental solutions that integrate nature and culture, land and sea. Joanna has conducted resilience approaches to conservation, including new conservation tools, leading research as a postdoctoral fellow at the Natural Capital Project of Stanford University, and jointly between Stanford and the Nature Conservancy. She is a co-awardee of the Ecological Society of America's Sustainability Science award. In addition, she works on multiple forms of science-and-justice, including supporting women and non-binary people in STEM research, serving as a gender-spectrum educator, and following the lead of Indigenous scientists and stewards.





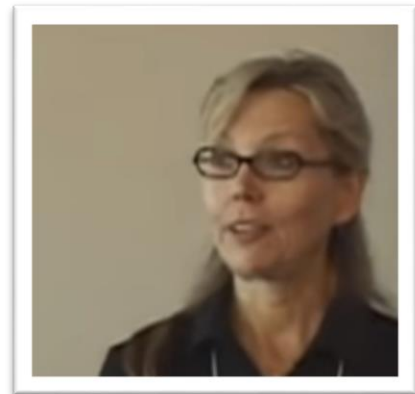
### ***Michael Nephew***

Michael Nephew is a retired computer programmer having worked as a programmer for PHI Services, and Native American Consultants. He worked as a curriculum developer and training coordinator for the Institute for the Development of Indian Law. He had previously worked as a community/manpower planner for Alu Like, Hawaii Council of American Indian Nations, and the United Indian Planners Association. He is a past President of the American Indian Society of Washington DC (AIS) as well as the American Indian Inter-Tribal Cultural Organization. He was also

Secretary of the board for the Capital Hill Arts Workshop. He is involved in performing/video arts and has worked with Fairfax Cable Access Channel, Native American TV, Capitol Hill Arts Workshop, Contemporary Arts Theatre Co., QBD Inc, Asian Stories in America, and other theatre companies.

### ***Jeanne Olund***

Jeanne Olund is passionate about developing high-performing teams and is a champion for diversity and inclusion in Science, Technology, Engineering, and Mathematics (STEM) fields. Jeanne earned her Ph.D. in Transformative Studies from the California Institute of Integral Studies; her dissertation (entitled *Women of Science, Technology, Engineering, and Mathematics: A Qualitative Exploration into Factors of Success*) was focused on women in STEM and explored successful STEM women in industry and academia through the lens of positive deviance. Jeanne currently manages an engineering team at GE Aviation and in this capacity, she continues to drive positive change through her immediate team but also at a larger scale. Aside from her doctorate, Jeanne has Master of Arts degrees in psychology and philosophy, and a Bachelor of Science degree in electrical engineering.





***Kennan Kellaris Salinero***  
***Convener for Connected Learning Vision Retreat***

Kennan Kellaris Salinero is the Executive Director of Relmagine Science, a non-profit based out of Washington DC that works to shift the way we 'do' science in the USA. She has held positions in numerous institutions within the basic sciences, including as a faculty member at Georgetown University (Dept of Chemistry), Celera Genomics (during the human genome project), at UC Berkeley, and at the Joint Genome Institute, as well as Los Alamos National Laboratories in New Mexico and Livermore National Labs in California. Her most recent research position, at Åbo Akademi, Turku, Finland, was in microbial genomics and inheritance patterns. She has served on the board of Innovation Tri-Valley Leadership Group (Northern California) and TEDxLivermore, as a lead organizer for Franchise for Humanity, as well as the advisory board for Avatar Research Institute (Washington DC) and the Open Science Alliance. She is part of the East Bay Economic Development Alliance and is licensee for TEDxLiveCrescentPark.

***Ramin Sedehi***

Ramin Sedehi's career is highlighted by his pragmatic leadership at higher education and health care institutions, as a master teacher creating meaningful learning experiences, and as an entrepreneur and institutional investor in furthering innovation within organizations. He is known as a visionary and a strategic leader. Ramin is a seasoned executive having led at several world-class organizations: UCSF, UCSF Stanford Health Care (USHC), University of Pennsylvania (Penn), American University of Beirut (AUB), and Weill Cornell Medicine- Qatar (WCMQ), spanning health care, academic medicine, consulting, and higher education. He has successfully navigated these entities through periods of significant change.





### ***Latishya Steele***



Dr. Latishya Steele is Director, Biosciences Programs and Curriculum in the Office of Graduate Education at Stanford School of Medicine. She works to develop curricular frameworks that integrate academic coursework, support for excellence in research, professional development for graduate students, postdoctoral fellows, and faculty, grant and fellowship writing, and oral and written communication. Latishya comes to this work as a researcher in fruit fly genetics with postdoctoral training in teaching and education as a Curriculum Fellow at Harvard Medical School. Latishya received her BS in biology from Brandeis University (MA) and her PhD in genetics from the University of Chicago (IL).

### ***Andrew Todhunter***

An award-winning writer, filmmaker, and lecturer at Stanford, Andrew Todhunter is the author of three books, including the PEN USA Literary Award-winning *A Meal Observed*, and dozens of articles for national publications including *National Geographic*, *The Atlantic* and *The Wall Street Journal*, among others. He has worked on numerous film projects, including productions for Lucasfilm and National Geographic Television. Andrew teaches interdisciplinary creativity and writing at Stanford, where he co-founded *The Senior Reflection*, a creative capstone program in Biology, and Stanford's *LifeWorks* program in integrative learning. He studied at the American University of Paris and received his BA in Ancient History from UC Berkeley. He later studied film production at NYU's Graduate Department of Film and Television and received an MFA in Creative Nonfiction from Antioch University in Los Angeles.



## ***Michele Weber***



Michele Weber is an evolutionary biologist with an enthusiasm for modernizing how we do scholarship and spreading appreciation for the beauty of nature. She has over fifteen years of experience in scientific research and philanthropy. Using creative strategy to address scientific challenges, Michele has conducted research on coral reefs around the world, working on questions related to symbiosis and biodiversity. More recently, Michele helped develop the scientific priorities and program strategy for the Symbiosis in Aquatic Systems Initiative at the Gordon and Betty Moore Foundation, which launched in 2019. Michele Weber joined the Revive & Restore team in January 2020. At Revive & Restore, Michele sources and develops diverse collaboration opportunities and innovative scientific solutions. She works with conservationists, scientists, government agencies and funders to build projects and strategies that address some of the world's most pressing conservation challenges. Michele holds a PhD in Integrative Biology and a BS in Molecular and Cell Biology, both from UC Berkeley.